

## COMUNE DI MONTEROSSO ALMO

PROVINCIA DI RAGUSA

LAVORI DI ADEGUAMENTO, AMPLIAMENTO E GESTIONE  
DELL'IMPIANTO ELETTRICO DEL CIMITERO DEL COMUNE DI MONTEROSSO ALMO  
CON LO STRUMENTO DEL PROJECT FINANCE

ELABORATO

INQUADRAMENTO  
TERRITORIALE

DITTA PROPONENTE: Almo Elettrica Dibenedetto s.r.l.  
Corso Umberto n.227/229 - Monterosso Almo (RG)

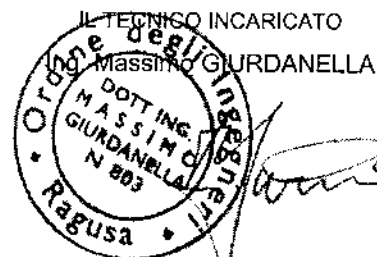
SCALA

DATA

04-03-2020

TAV.

3



Ing. Massimo GIURDANELLA, Via Madonna delle Grazie, 68 97010 Giarratana (RG) - Tel/Fax 0932 975075 Cell. 3282422261  
( C.F. GRDMSM74S25F258B P.I. 01208090884 )

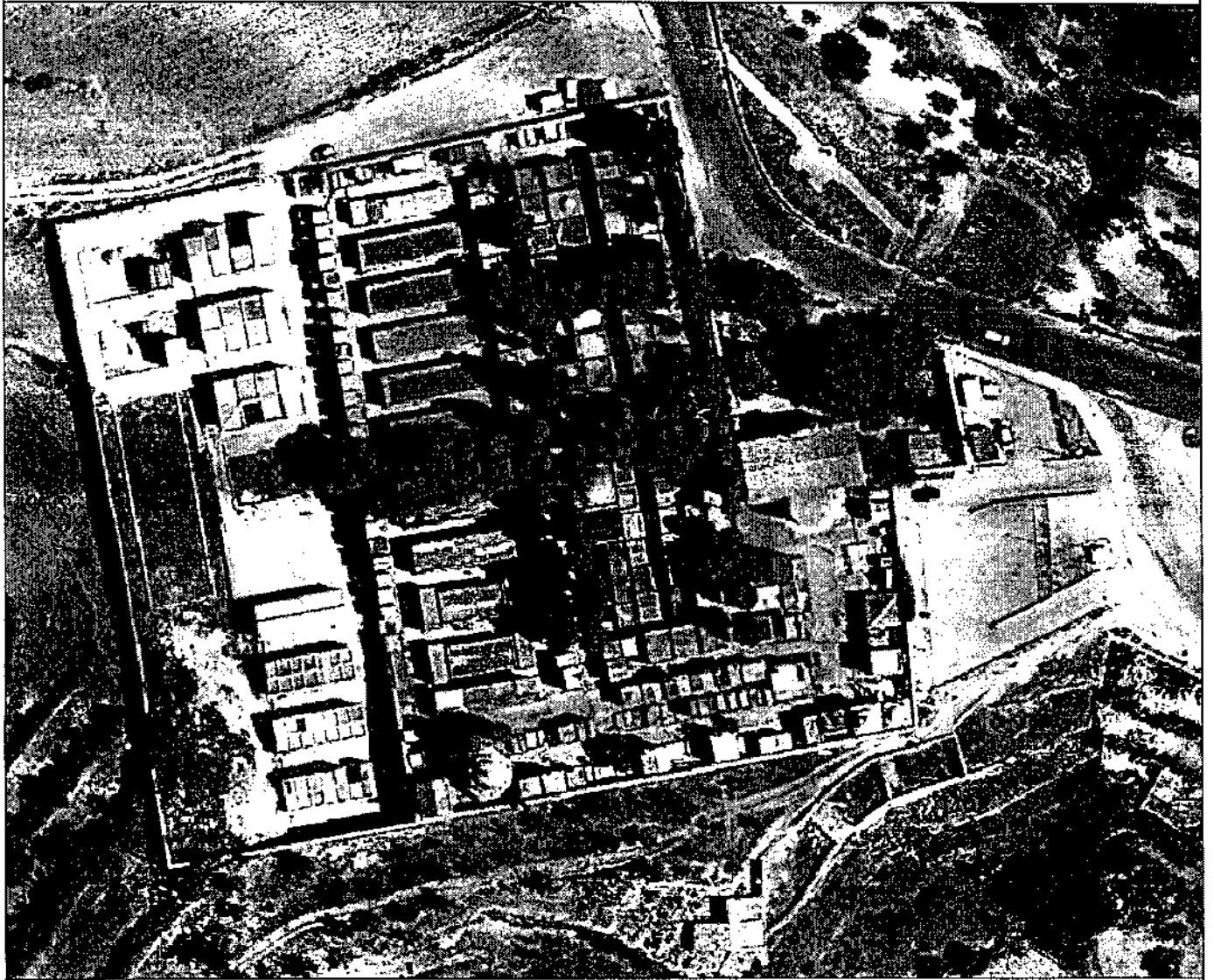
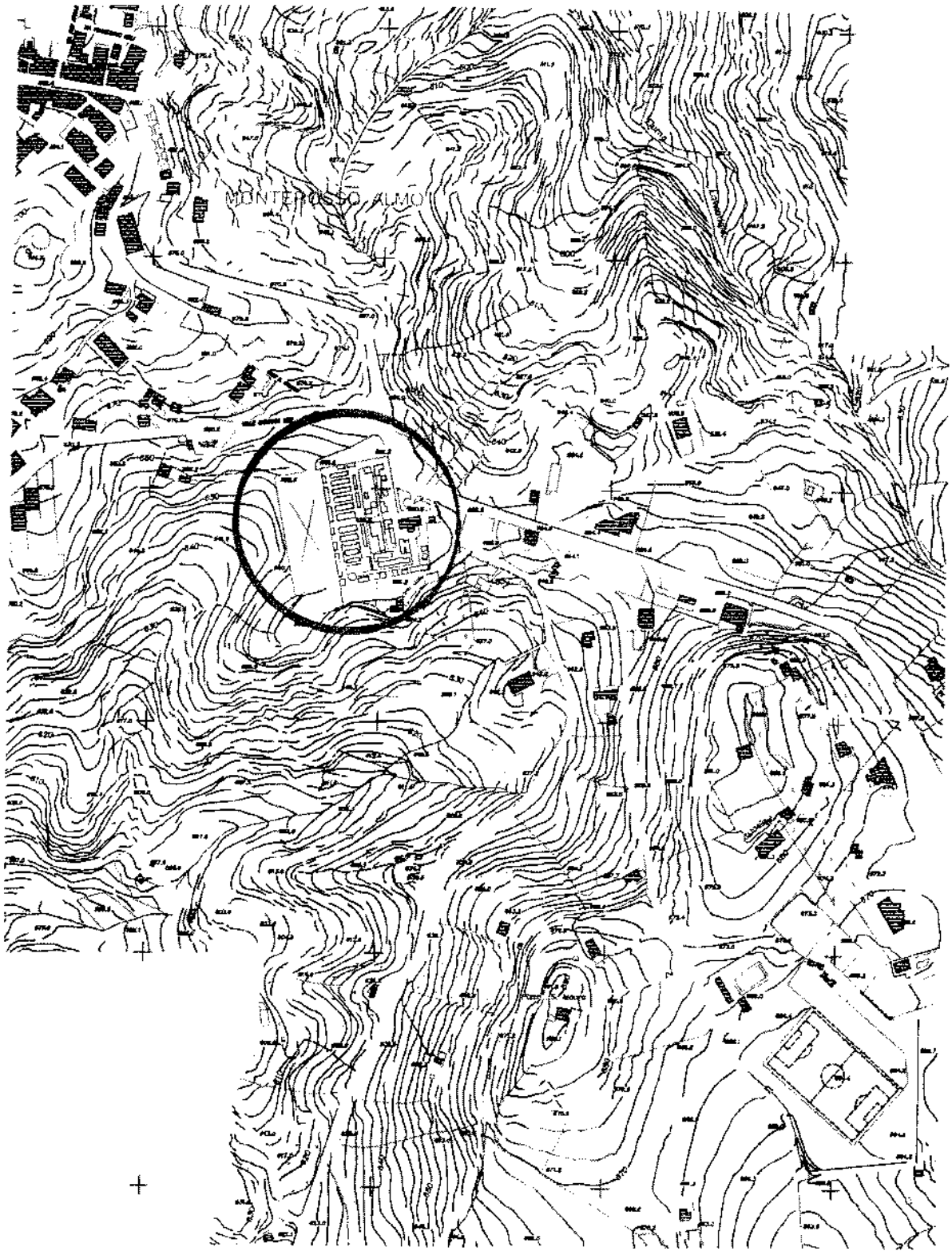


IMMAGINE SATELLITARE  
SCALA 1:1000



**STRALCIO  
AEREOFOTOGRAFOMETRICA  
SCALA 1:5000**

A detailed topographic map of Monterosso, Italy, showing contour lines, roads, and buildings. The map is oriented with North at the top. The word 'MONTEROSSO' is printed in large, bold, black letters across the center of the map. A prominent road runs diagonally from the top left towards the bottom right. Another road runs horizontally across the middle. The terrain is hilly, with contour lines indicating elevations. In the bottom right corner, there is a small inset map showing the location of Monterosso within a larger geographical context. The text 'STRALCIO PRG' and 'SCALA 1:5000' is printed in the bottom right corner.

# MONTEROSSO

P.ZO S. MORO

STRALCIO PRG  
SCALA 1:5000



Ufficio Provinciale di Eugubina - Territorio Suovial Colateralis - Direttore: ING. DORATO MARTINEZ